

# COMPREHENSIVE CANCER INFRASTRUCTURES FOR EUROPE – CCI4EU

Overview of the Project.  
Simon Oberst, OECI Director of Quality and  
Accreditation



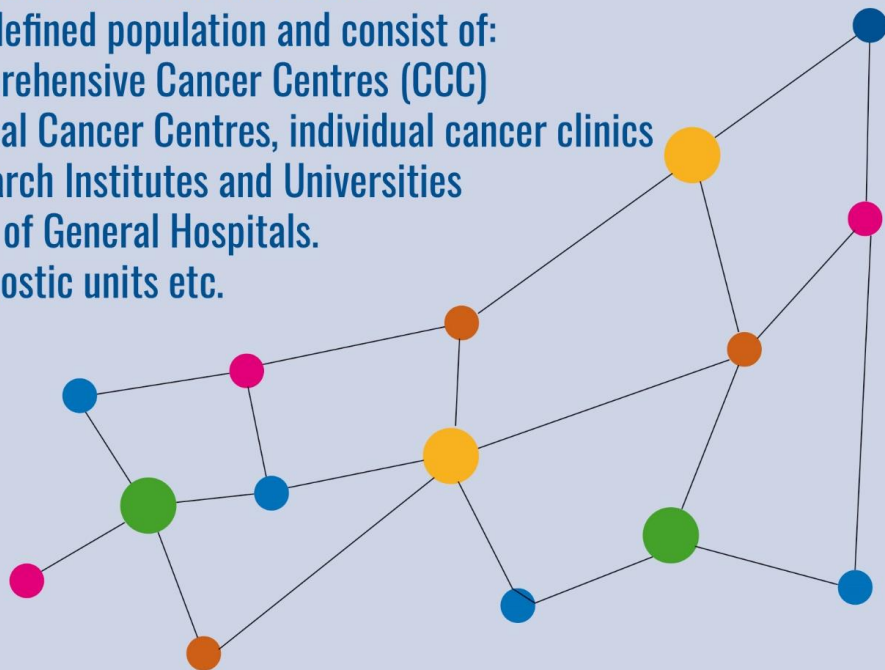
# What is a CCI?

**CCI** A Comprehensive Cancer Infrastructure should also include public functions such as public health, screening, primary and community care, and population cancer registries. Other supporting infrastructures such as –omics and clinical trials platforms

## CCN

Comprehensive Cancer Networks\* serve a defined population and consist of:

- Comprehensive Cancer Centres (CCC)
- Clinical Cancer Centres, individual cancer clinics
- Research Institutes and Universities
- Units of General Hospitals.
- Diagnostic units etc.



\* Including Comprehensive Cancer Care Networks according to CraNE WP 6 (CCCN)

# What is capacity building (CB)?

## Dimensions of Capacity Building

### Individual

- Needs assessment
- Training
- Extending knowledge and competencies
- Processes for talent development and exchange

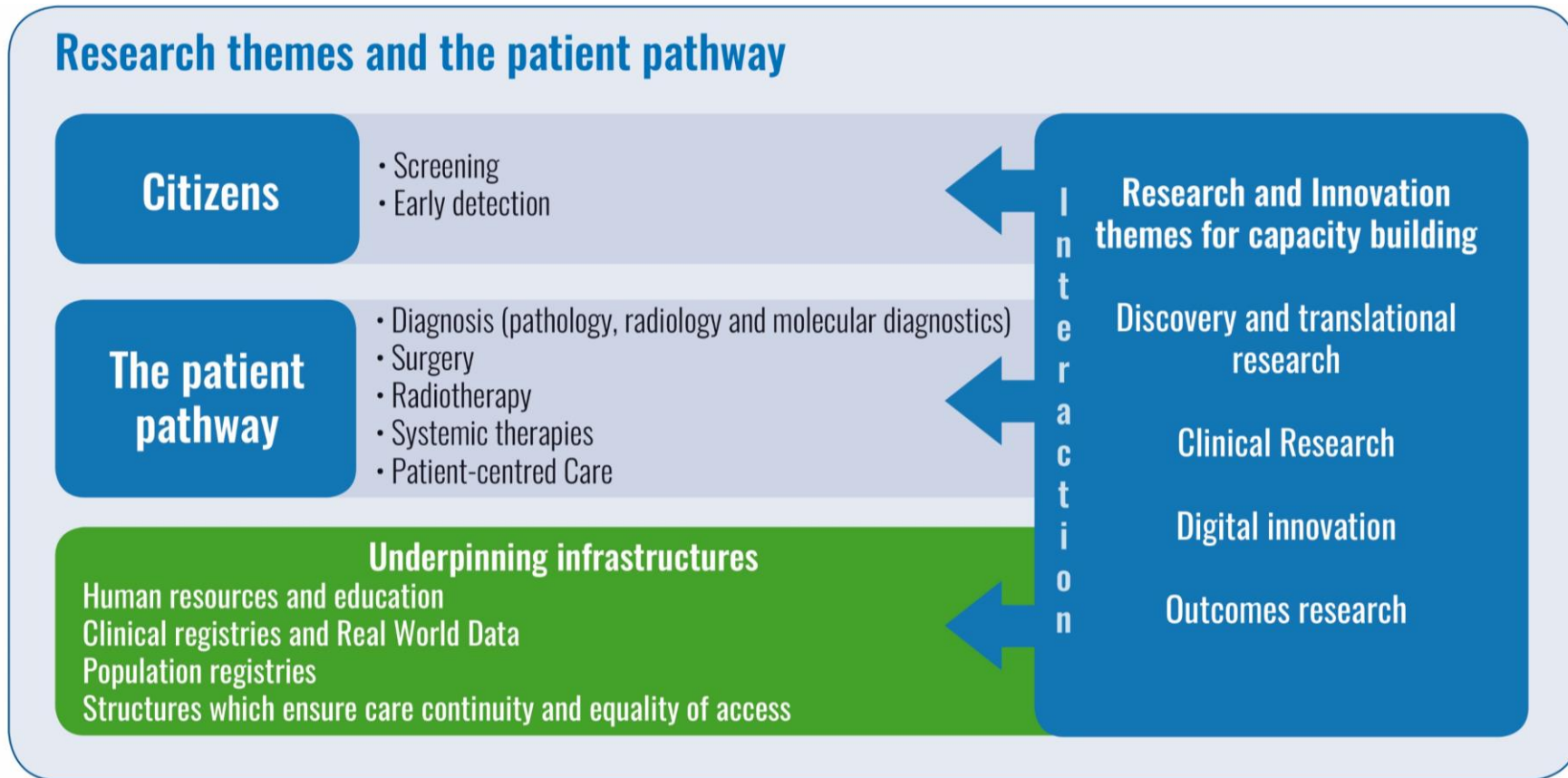
### Institutional

- Needs assessment
- Gap analysis and identifying barriers
- Sharing excellent practices
- Building resources (data) and teams
- Changing corporate mindsets

### Systemic

- Needs assessment
- Breaking down silos
- Bringing in outside expertise (twinning and teaming)
- Networking, governance and organisation
- Redesign of the system and sustainability

# How the research, innovation and integration themes cover the citizen/patient pathway



# What are the steps of implementation of CB?

To achieve these challenging results in terms of process and outcomes, CCI4EU will design and implement the following sequential steps



1

## Define quality indicators and Maturity Model

This will be done in integration with current EU actions focused on similar concepts (CraNE2, JANE2 and ECHOS-HUBS)

# What are the steps of implementation of CB?

2

**Profile each MS and a few Associated Countries in terms of CCI presence and levels of maturity**

The opening hypothesis is that presence and maturity of CCIs varies widely among MSs without satisfying a comprehensive definition

3

**Design tailored CBP interventions, giving priority to member states without any CCI**

This will be done according to the maturity of CCIs, the specific need analyses from the quality indicator results, and involve relevant stakeholders in each Member State

4

**Deliver online tailored training courses open to teams in all MSs and ACs**

These online interventions will be designed to train teams rather than isolated individual trainees, so that impact in CCIs can be ascertained

# What are the steps of implementation of CB?

5

## Implement onsite interventions

- (a) Deep Dives in up to 9 CCIs in MSs with targeted interventions involving teams of experts consulting
- (b) 3 Capacity Building Conferences oriented towards widening participating countries to implement CB among teams from CCIs

6

## Scale up and sustain development

The CB interventions will be evaluated for effectiveness, and recommendations will be formulated for designing future CB scaled-up programmes using EU instruments to build cancer research and care capacity in all CCIs in all MSs

7

## Disseminate and exploit

The results of the evaluated CB interventions will be published in many formats and communicated to policymakers, professionals, patients and other stakeholders for future actions

**Profile each MS and a few  
Associated Countries  
in terms of CCI presence  
and levels of maturity**

The opening hypothesis is that  
presence and maturity of CCIs varies  
widely among MSs without satisfying  
a comprehensive definition

# Digital Survey

This digital survey has 3 core objectives:

1. Map existing collaborations across Europe on integrating cancer research with care, education and training on eight CCI4EU themes;
2. Measure the maturity of these initiatives and identify candidates for CBIs to strengthen collaborations in research and care;
3. Understand the context in which the potential/actual CCI(s) are developing.

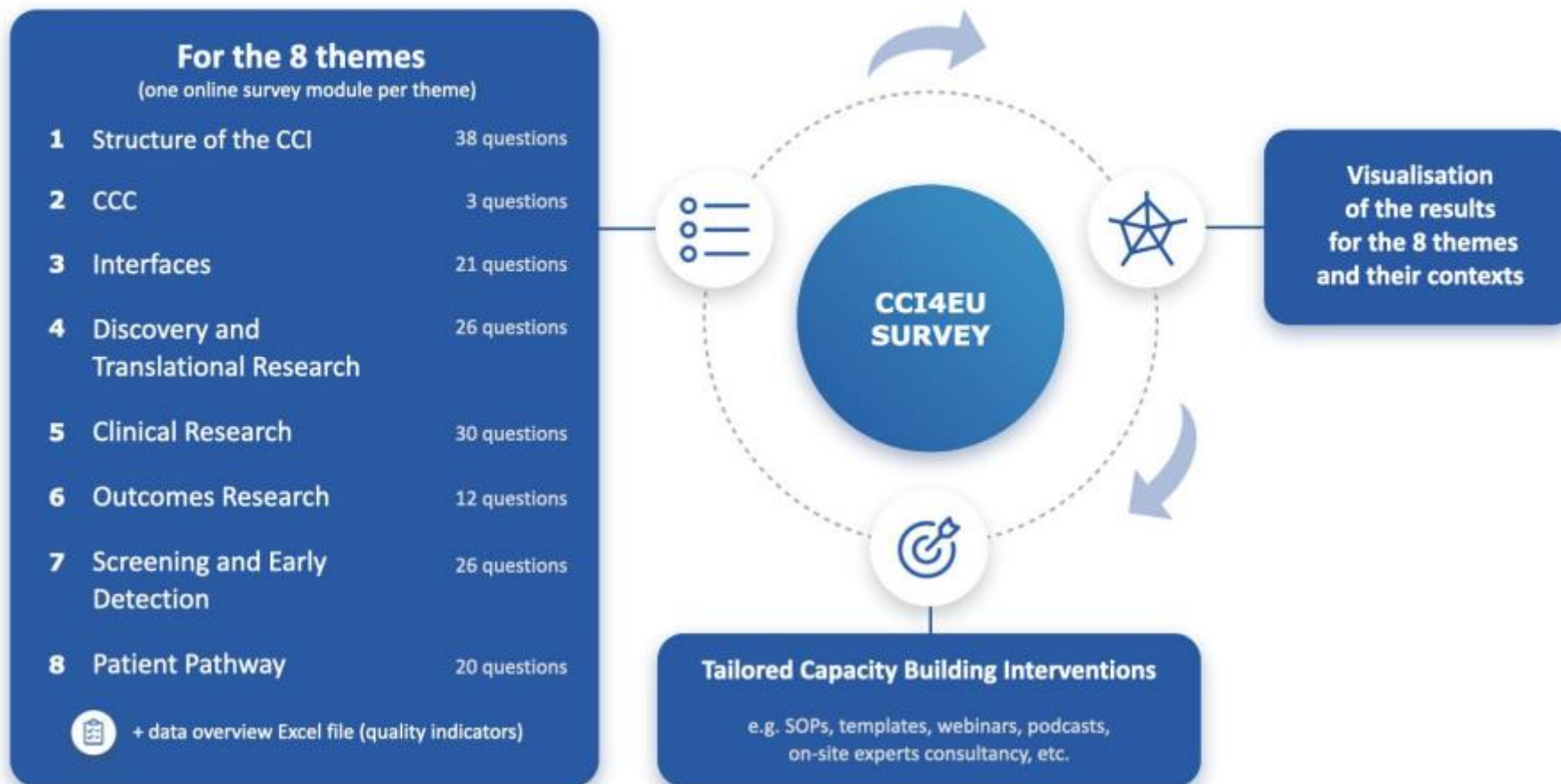


## Profile each MS and a few Associated Countries in terms of CCI presence and levels of maturity

The opening hypothesis is that presence and maturity of CCIs varies widely among MSs without satisfying a comprehensive definition

# CCI4EU SURVEY

Self-assessment tool setting up and further developing Comprehensive Cancer Infrastructures (CCI)



**Deadline 31<sup>st</sup> May 2024** → to become eligible for CCI4EU CBI.  
**The Survey will remain open until fall 2024.**

**Design tailored CBP interventions, giving priority to member states without any CCI**

This will be done according to the maturity of CCIs, the specific need analyses from the quality indicator results, and involve relevant stakeholders in each Member State

# Capacity Building Interventions

**Online Training Course**

**Regional Conferences**

**DEEP DIVES**

**Preceptorships**

**One-off visits to an expert's site**

### Implement onsite interventions

- (a) Deep Dives in up to 9 CCIs in MSs with targeted interventions involving teams of experts consulting
- (b) 3 Capacity Building Conferences oriented towards widening participating countries to implement CB among teams from CCIs

# Deep Dives

- A Deep Dive is a tailored and structured intervention within a Comprehensive Cancer Infrastructure (CCI).
- The purpose is to help the CCI build their capacity in particular domains by providing expert consultancy advice
- It consists of 3 site visits to the CCI by multidisciplinary expert teams, according to the specific domains of intervention chosen for that Deep Dive site.

A Deep Dive is composed of **3 site visits**:

1. **Detailed diagnosis** → Situational analysis
2. **Intervention** → Design of the step change improvement
3. **Follow-up** → Site to report back and gain further focused advice

## A Project Management Basis

- Each chosen Deep Dive site will have a **CCI4EU Project Manager (2.3 Person months are estimated for this task over 25 months)** – provided in the budgets of OECl, IKNL and 5 other partners)
- Each team will be led by **an expert chair** who is a senior oncologist, researcher, or cancer centre director.
- Each chosen Deep Dive site will be granted a **6 person months local Project Manager** (temporarily held in OECl budget)

		Themes where the maturity model has indicated the need for intervention							
THEME (examples)	CCI structure	Screening	Translational research	Clinical Trials	Integration of research and care	Patient empowerme nt	Diagnostics	Treatment	Patient- centred care
CCI 1	✓	✓	✓	✓	✓	✓		✓	
CCI 2	✓		✓		✓		✓	✓	✓
CCI 3	✓				✓	✓			

# Expert role within a Deep Dive



- Contribute the successful fulfilment of the Deep Dive according to the timelines and templates according to their specific expertise
- Work collaboratively with the Deep Dive multi-professional team to ensure the achievement of the specific Capacity Building objectives according to their specialty and area of intervention
- Liaise with the appointed CCI4EU Project Manager regarding meetings and organisation
- Decide on the required supplemental data to be obtained from the local CCI
- Work with the team to ensure that milestones are achieved (along with the Project Manager)
- Work with the team colleagues to ensure that interim and final reports are written and reported on time and contain the requisite content regarding their specialty and area of intervention
- Expected to use capacity building approaches appropriate to the local CCI situation and the precise domain of intervention. These expert consultation approaches will include: structured interviews, group work, logic models, comparison with other CCIs, access to tools and resources in the Resources Centre, advice on steps for improvement, and empowering the local experts.

# Spread of expertises

Domain	Number of experts
Clinical Trials	29
Specifically, Early Phase trials	12
Translational research	32
Outcomes and Implementation Research	24
Data science and IT	16
Innovation processes and technology transfer	16
Education and Training (research)	24
Education and Training (clinical)	30
Medical Oncology	19
Radiation Oncology	11
Surgical Oncology	4
Pathology including molecular pathology	4
Radiology including nuclear medicine	5
Precision cancer medicine	18
Haemato-Oncology	7
Paediatric Oncology	2
Governance and management	29
Quality management	17
Cancer screening	14
Public health and primary prevention	8
Primary Care Physician	0
Population Cancer Registries	9
Technical patient pathway design	8
Patient involvement and empowerment	23
Oncology Nursing	10
Survivorship and rehabilitation	7
Patient pathway coordination	14
Palliative and supportive care	11
Psycho-oncology	12
Benchmarking	7
Health Economics	7
National Cancer Strategies	21
Consultancy and/or mentoring in change management	16



**Deliver online tailored training courses open to teams in all MSs and ACs**

These online interventions will be designed to train teams rather than isolated individual trainees, so that impact in CCI can be ascertained

# Online Capacity Building – Online Training Courses

- 10 one-day courses developed and organized by European School of Oncology (ESO)
- The aim is to help countries develop an effective comprehensive infrastructure
- The courses will be delivered in English
- Registration to participate is free but mandatory



**Deliver online tailored training courses open to teams in all MSs and ACs**

These online interventions will be designed to train teams rather than isolated individual trainees, so that impact in CCI can be ascertained

# First Online Training Course

## 4<sup>th</sup> July 2024

### Aim

Look into the **components** of a comprehensive cancer infrastructure, exploring **how it operates** to **enhance patient care, foster groundbreaking research, and empower communities.**

### Target audience

People involved in management, coordinators, clinicians, researchers, and directors.



Save the Date!

## WHAT DOES A COMPREHENSIVE CANCER INFRASTRUCTURE DO?

CCI4EU online course

4 July 2024  
14.00 - 18.00 (CEST)  
Live online course

www.e-ESO.net

Simon Oberst, DK  
Course Co-chair

Eva Jolly, SE  
Course Co-chair

Funded by the European Union  
Horizon Europe Grant Agreement n. 101102746

### Implement onsite interventions

- (a) Deep Dives in up to 9 CCI in MSs with targeted interventions involving teams of experts consulting
- (b) 3 Capacity Building Conferences oriented towards widening participating countries to implement CB among teams from CCIs

# Capacity Building Conferences – Regional Conferences

Three capacity building conferences focusing on **widening participation countries**, but open to teams from all Member States and the participating Associated Countries, will be delivered.

The themes for training and Capacity Building offered at these conferences will be chosen with reference to the results of the CCI Maturity Model.

The themes will focus on:

- translation of cancer research,
- Innovation;
- digitalisation into high quality care for all citizens – involving translational and clinical research, diagnostics including at a molecular level, all modalities of cancer treatment, establishing coherent CCIs, data flow, and patient empowerment.

### Implement onsite interventions

- (a) Deep Dives in up to 9 CCIs in MSs with targeted interventions involving teams of experts consulting
- (b) 3 Capacity Building Conferences oriented towards widening participating countries to implement CB among teams from CCIs

# First Regional Conference

«***Bringing research infights into clinical implementation***»

**10-11 October 2024 | Warsaw, Poland**

The conference will be a combination of lectures by international experts, discussions and breakout session.

**Attendance to the Conference is by application only.**

Application deadline: **30<sup>th</sup> June 2024 – 100 participants will be selected to attend.**

To apply provide:

- CV & list of publications,
- Motivation letter,
- Completed [template](#) for the Research and Innovation Case Study.

# Preceptorship / Site Visit

Centres submitting a survey response after the 31<sup>st</sup> May deadline, cannot be considered eligible for a Deep Dive.

However, if the response is submitted **by autumn 2024**, such centres may be considered eligible for:

- A ***preceptorship*** over a defined period to an individual at an expert's institution;
- A ***site visit*** of a team to an expert's institution.
- ***Online courses***

**Thank you for your attention**